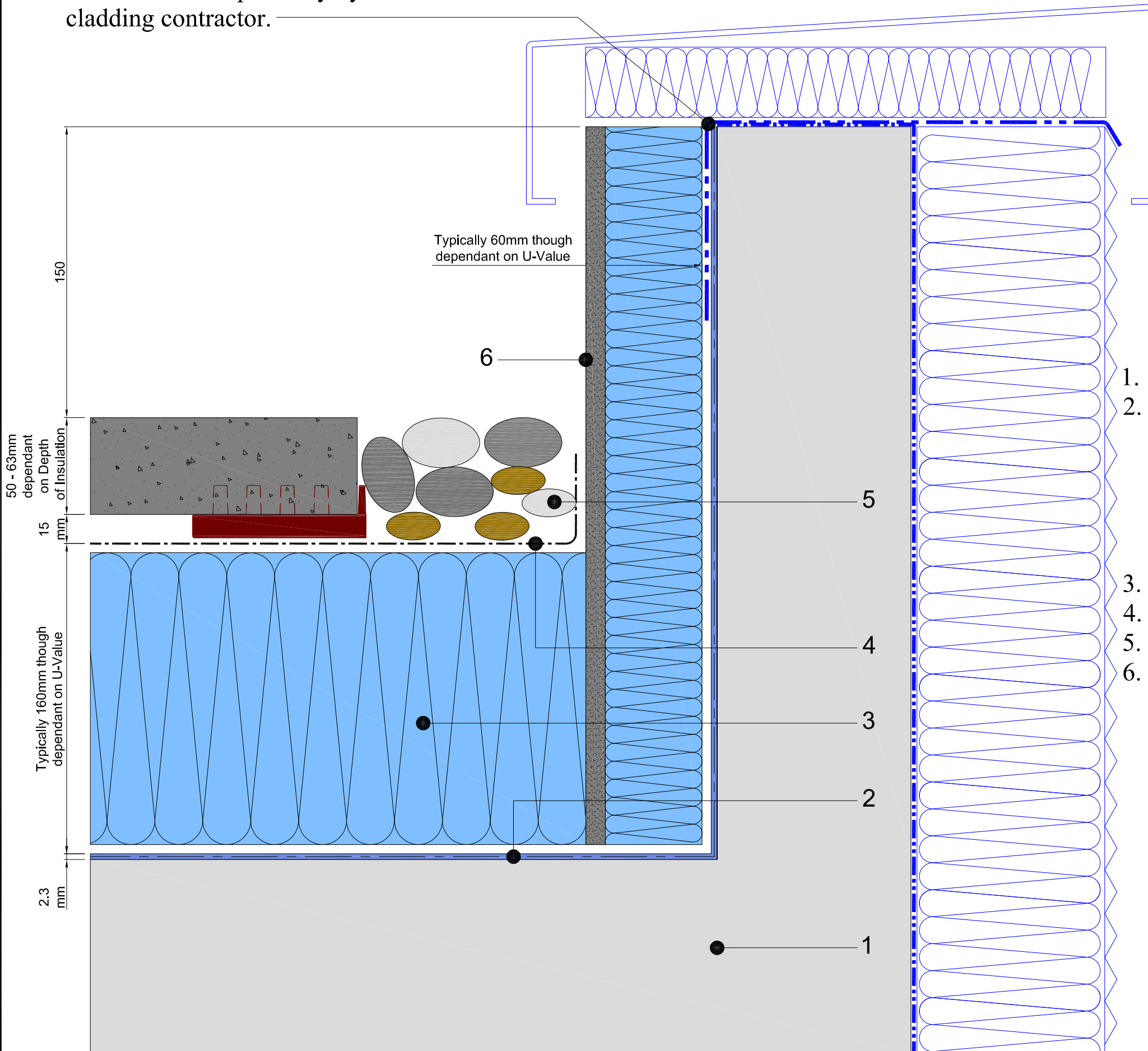


Membrane sealed by cladding contractor to Paraflex. Any membrane sealed direct to Paraflex must be checked for compatibility by the cladding contractor.



1. Concrete deck
2. Paraflex system
 - > Paraflex universal primer
 - > Hand cast kiln dried sand cast into primer
 - > Paraflex FD 1.5 mm initial coat
 - > Radmat 165Kg reinforcement layer
 - > Paraflex FD 0.8mm top coat
3. Extruded polystyrene insulation board.
4. Min-K thermal sheet.
5. Paviors and ballast margin
6. Extruded polystyrene cementitious faced insulation Board.



TITLE		INVERTED PARAFLEX PARAPET DETAIL	
DATE:	Aug ' 09	SCALE	N.T.S.
DRAWING NUMBER		RAD-PAR-102	