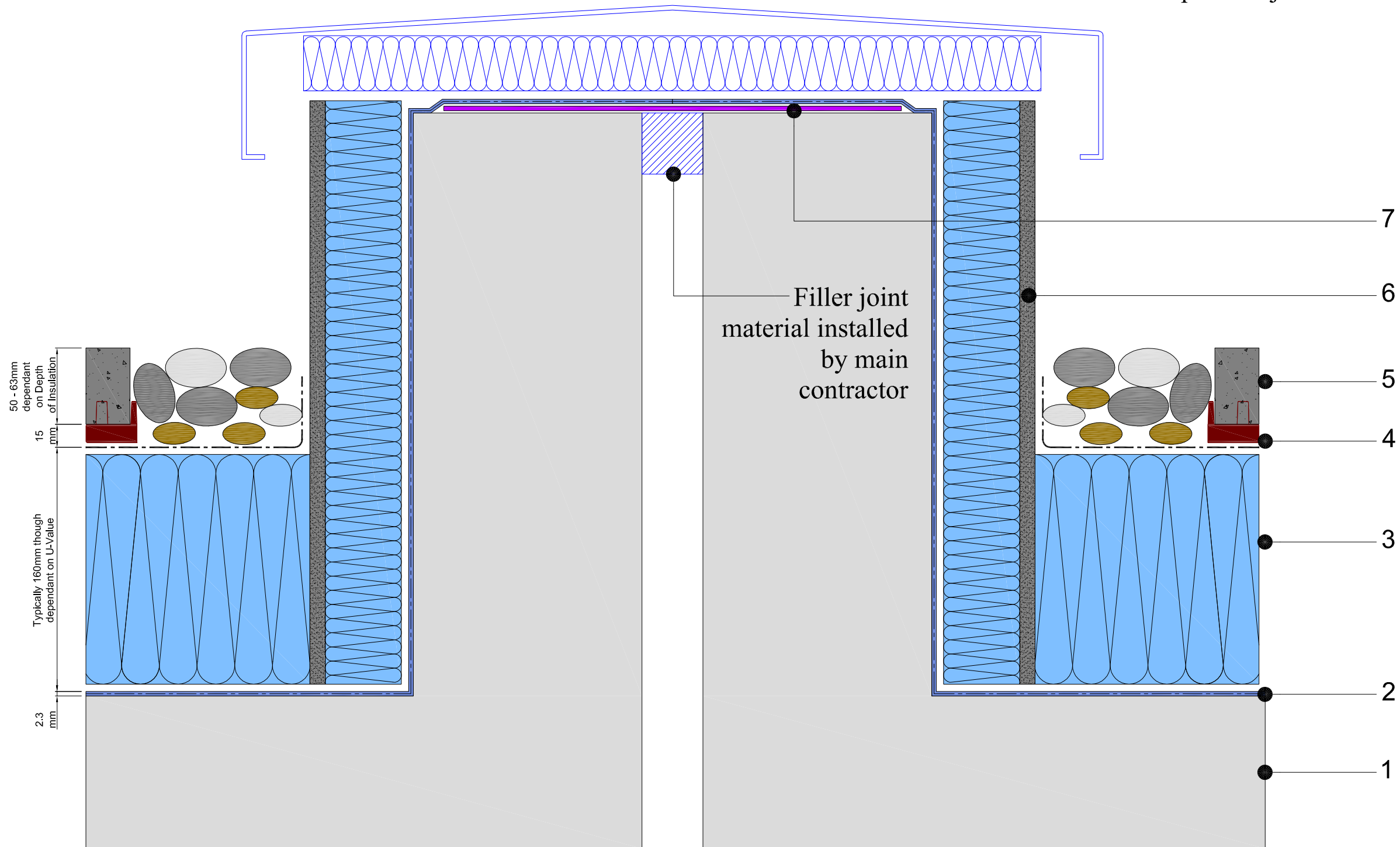


1. Concrete deck
2. Paraflex system
  - > Paraflex universal primer
  - > Hand cast kiln dried sand cast into primer
  - > Paraflex FD 1.5 mm initial coat
  - > Radmat 165Kg reinforcement layer
  - > Paraflex FD 0.8mm top coat
3. Extruded polystyrene insulation board.
4. Min-K thermal sheet.
5. Paviers and ballast margin
6. Extruded polystyrene cementitious faced insulation board.
7. Radflex 125 expansion joint



**Radmat**  
building products

TITLE **INVERTED PARAFLEX  
KERB EXPANSION JOINT**

DATE: **Aug '09** SCALE **N.T.S.**

DRAWING NUMBER  
**RAD-PAR-105**