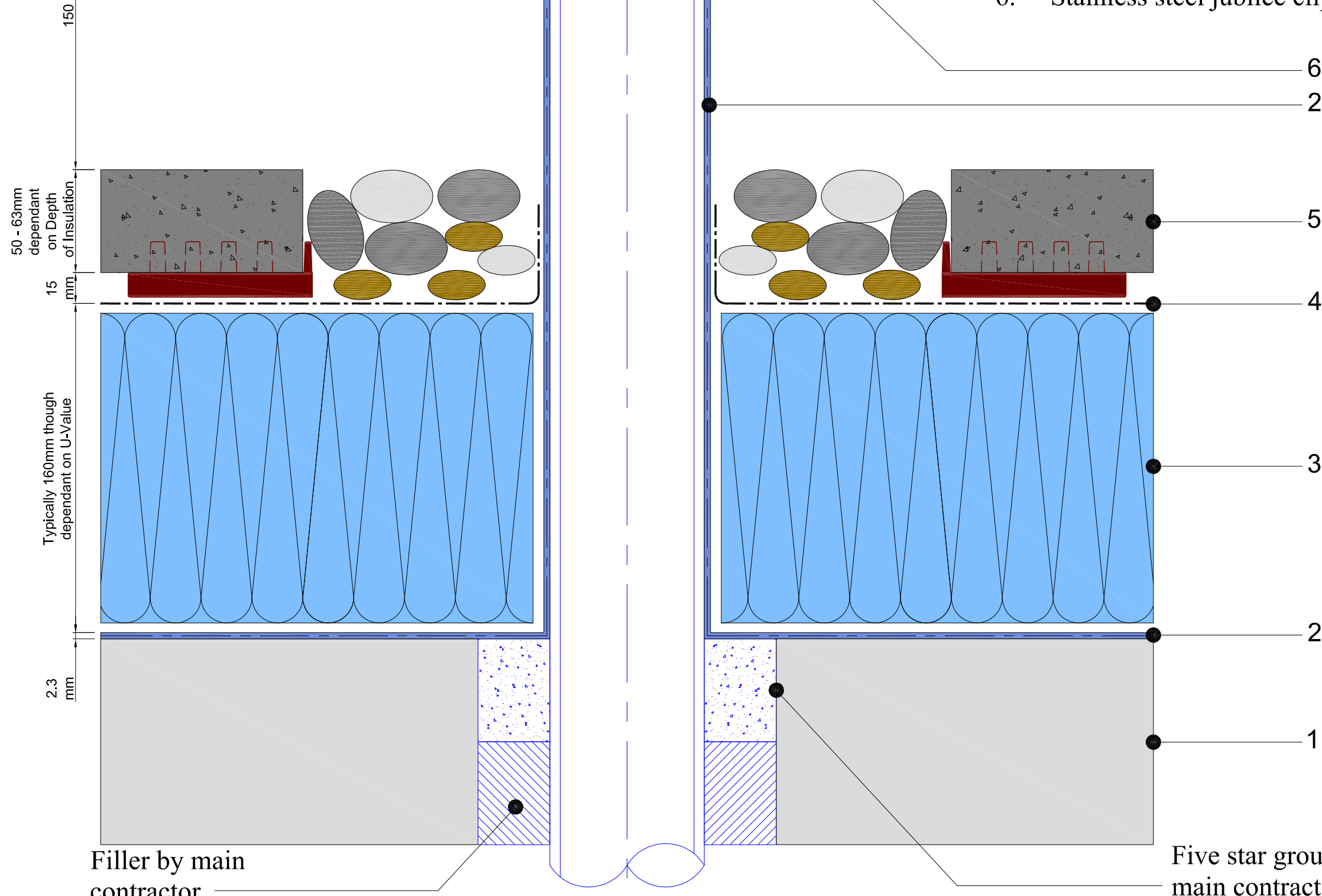


Cowl flashing by M&E contractor to allow for hot air to vent

Metal pipe

1. Concrete deck
2. Paraflex system
 - > Paraflex universal primer
 - > Hand cast kiln dried sand cast into primer
 - > Paraflex FD 1.5 mm initial coat
 - > Radmat 165Kg reinforcement layer
 - > Paraflex FD 0.8mm top coat
3. Extruded polystyrene insulation board.
4. Min-K thermal sheet.
5. Paviers and ballast margin
6. Stainless steel jubilee clip



Radmat building products	
TITLE INVERTED PARAFLEX COLD PIPE PENETRATION DETAIL	
DATE: Aug '09	SCALE N.T.S.
DRAWING NUMBER RAD-PAR-106	