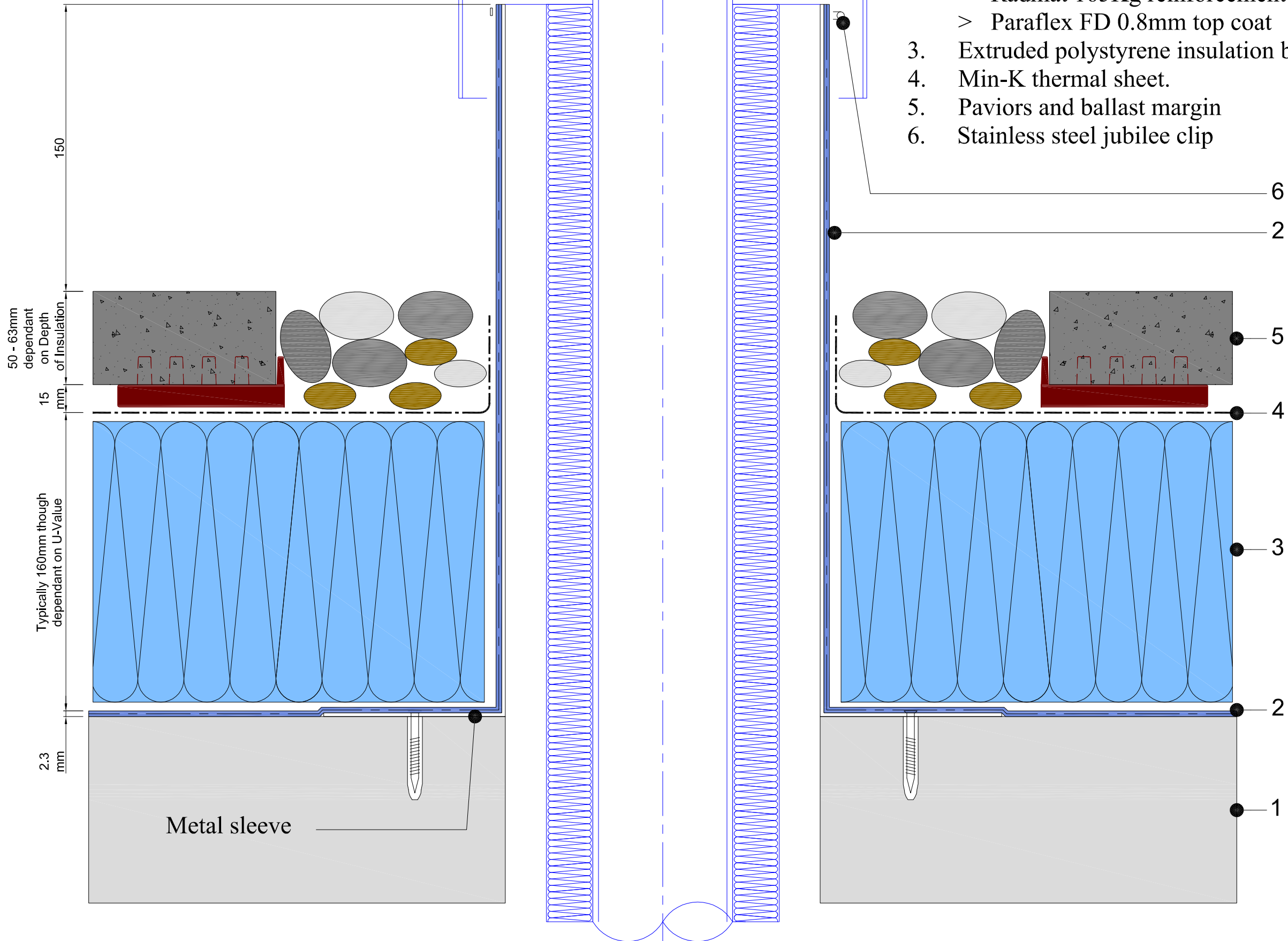


Metal pipe
Cowl flashing by M&E contractor to allow for hot air to vent

1. Concrete deck
2. Paraflex system
 - > Paraflex universal primer
 - > Hand cast kiln dried sand cast into primer
 - > Paraflex FD 1.5 mm initial coat
 - > Radmat 165Kg reinforcement layer
 - > Paraflex FD 0.8mm top coat
3. Extruded polystyrene insulation board.
4. Min-K thermal sheet.
5. Paviers and ballast margin
6. Stainless steel jubilee clip



Radmat
building products

TITLE **INVERTED PARAFLEX
HOT PIPE PENETRATION DETAIL**

DATE: **Aug ' 09** | SCALE **N.T.S.**

DRAWING NUMBER
RAD-PAR-107