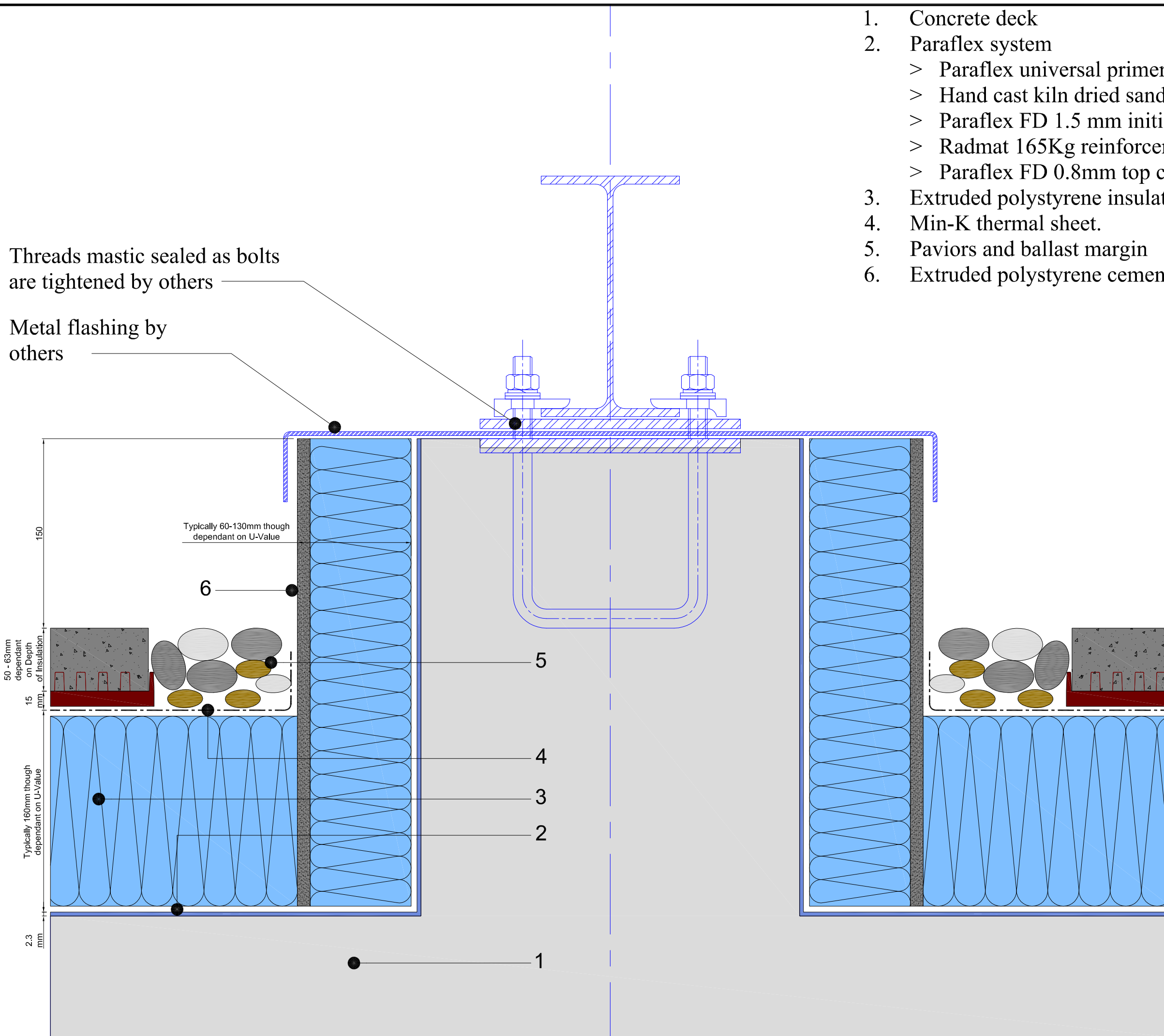


1. Concrete deck
2. Paraflex system
 - > Paraflex universal primer
 - > Hand cast kiln dried sand cast into primer
 - > Paraflex FD 1.5 mm initial coat
 - > Radmat 165Kg reinforcement layer
 - > Paraflex FD 0.8mm top coat
3. Extruded polystyrene insulation board.
4. Min-K thermal sheet.
5. Paviers and ballast margin
6. Extruded polystyrene cementitious faced insulation board.

Threads mastic sealed as bolts are tightened by others

Metal flashing by others



TITLE		INVERTED PARAFLEX PLINTH DETAIL	
DATE:	Aug '09	SCALE	N.T.S.
DRAWING NUMBER		RAD-PAR-108	