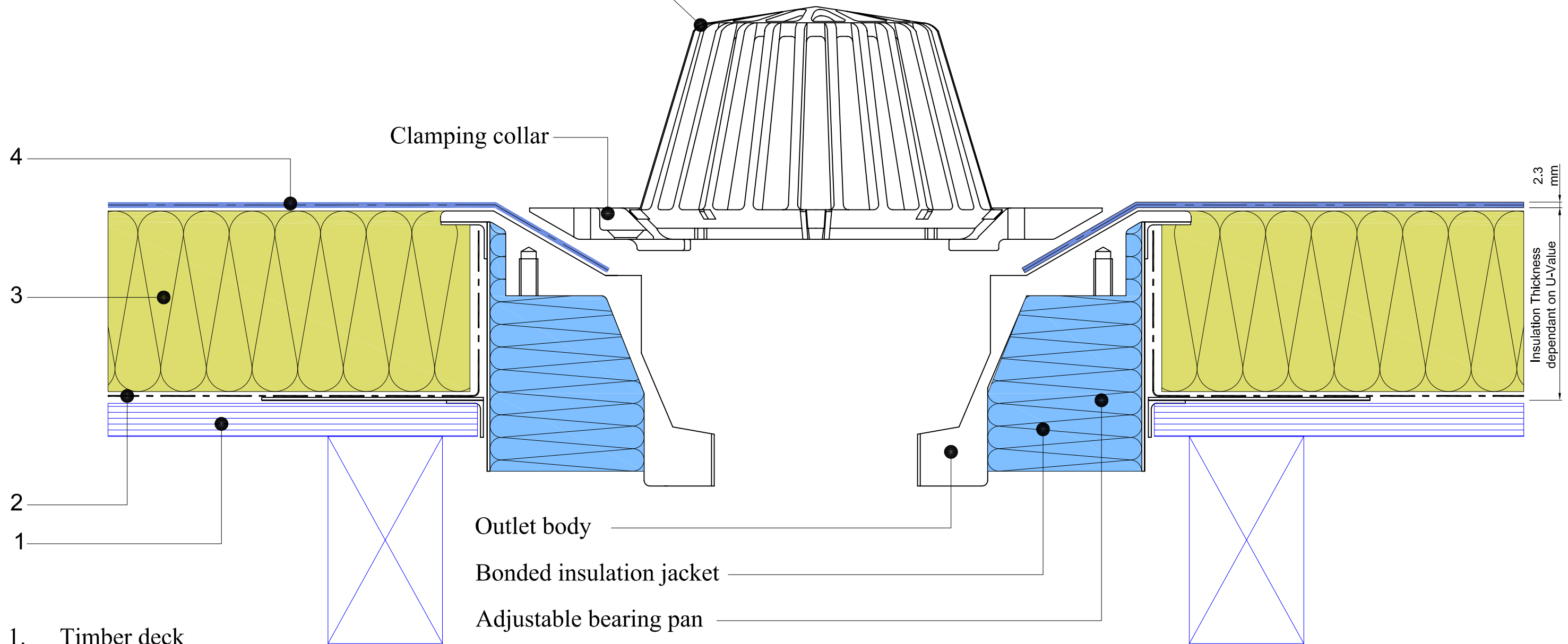


Wade or similar approved outlet.
"Dome or flat grating"



1. Timber deck
2. Self adhesive vapour barrier.
3. Tapered or uniform polyurethane insulation adhered to base with Radmat adhesive layer.
 - > Self adhesive foil to all board joints.
4. Paraflex System
 - > Paraflex universal primer
 - > Hand cast kiln dried sand
 - > Paraflex FD 1.5 mm initial coat
 - > Radmat 165Kg reinforcement layer
 - > Paraflex FD 0.8mm top coat



TITLE	
WARM ROOF PARAFLEX TIMBER DECK OUTLET DETAIL	
DATE:	Aug ' 09
SCALE	N.T.S.
DRAWING NUMBER	
RAD-PAR-206	