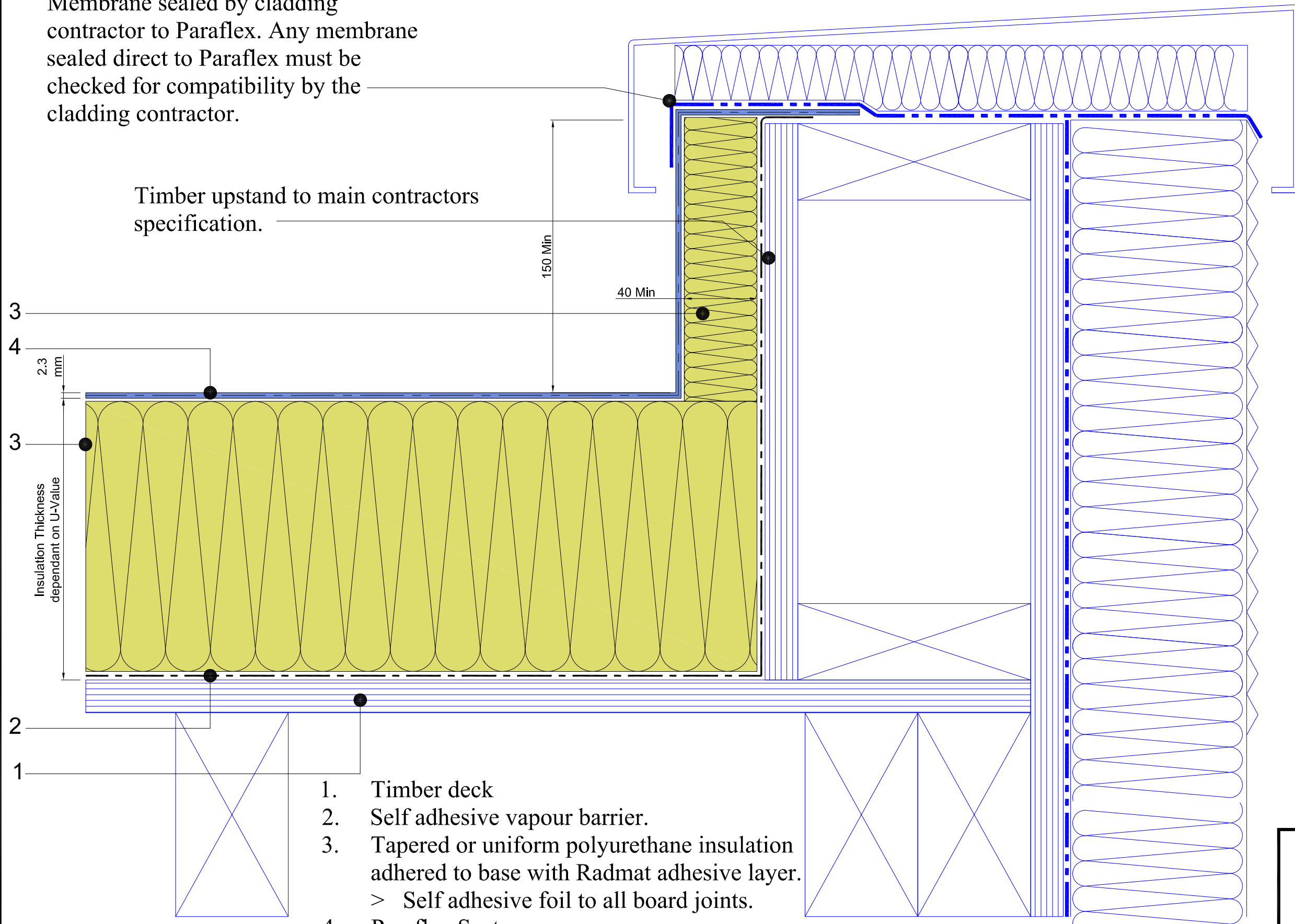


Membrane sealed by cladding contractor to Paraflex. Any membrane sealed direct to Paraflex must be checked for compatibility by the cladding contractor.

Timber upstand to main contractors specification.



1. Timber deck
2. Self adhesive vapour barrier.
3. Tapered or uniform polyurethane insulation adhered to base with Radmat adhesive layer.
 - > Self adhesive foil to all board joints.
4. Paraflex System
 - > Paraflex universal primer
 - > Hand cast kiln dried sand
 - > Paraflex FD 1.5 mm initial coat
 - > Radmat 165Kg reinforcement layer
 - > Paraflex FD 0.8mm top coat



TITLE **WARM ROOF PARAFLEX
TIMBER DECK PARAPET DETAIL**

DATE: **Aug '09** SCALE **N.T.S.**

DRAWING NUMBER
RAD-PAR-207