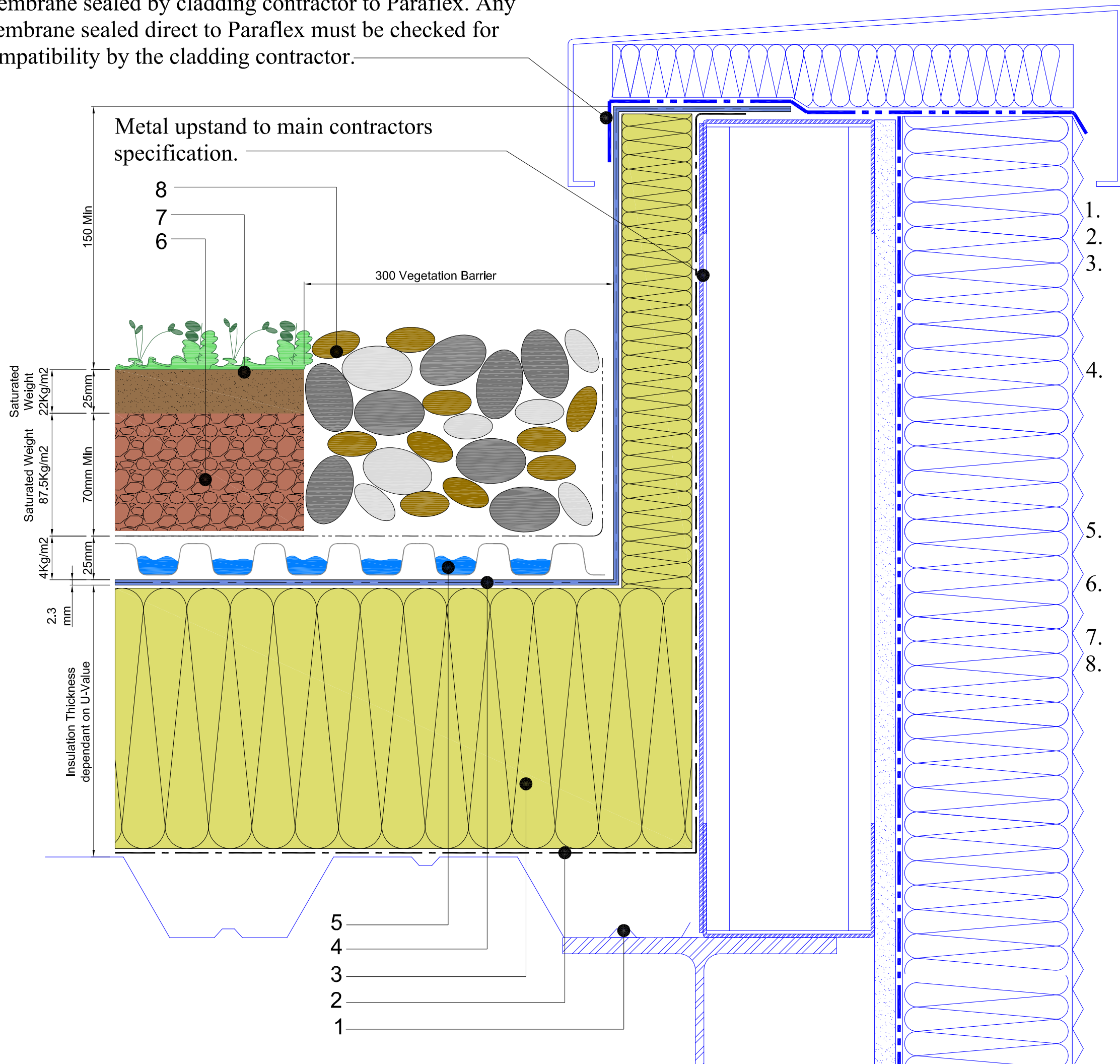


Membrane sealed by cladding contractor to Paraflex. Any membrane sealed direct to Paraflex must be checked for compatibility by the cladding contractor.



Metal upstand to main contractors specification.

8
7
6

300 Vegetation Barrier

150 Min
25mm
Saturated Weight 22Kg/m²
70mm Min
Saturated Weight 87.5Kg/m²
4Kg/m²
25mm
2.3 mm
Insulation Thickness dependant on U-Value

1. Metal decking
2. Self adhesive vapour barrier.
3. Tapered or uniform polyurethane insulation adhered to base with Radmat adhesive layer.
> Self adhesive foil to all board joints.
4. Paraflex System
> Paraflex universal primer
> Hand cast kiln dried sand
> Paraflex FD 1.5 mm initial coat
> Radmat 165Kg reinforcement layer
> Paraflex FD 0.8mm top coat
5. Radmat D25 water retention & drainage board, G12 filter membrane
6. Radmat 100% recycled green roof growing media
7. Pregrown roof garden mat
8. 300mm wide ballast margin

Note: Expected rainwater retention from 20 Litres/m²



TITLE **WARM ROOF PARAFLEX METAL DECK SEDUM BLANKET GARDEN PERIMETER DETAIL**

DATE: **Aug '09** SCALE **N.T.S.**

DRAWING NUMBER
RAD-PAR-306

5
4
3
2
1