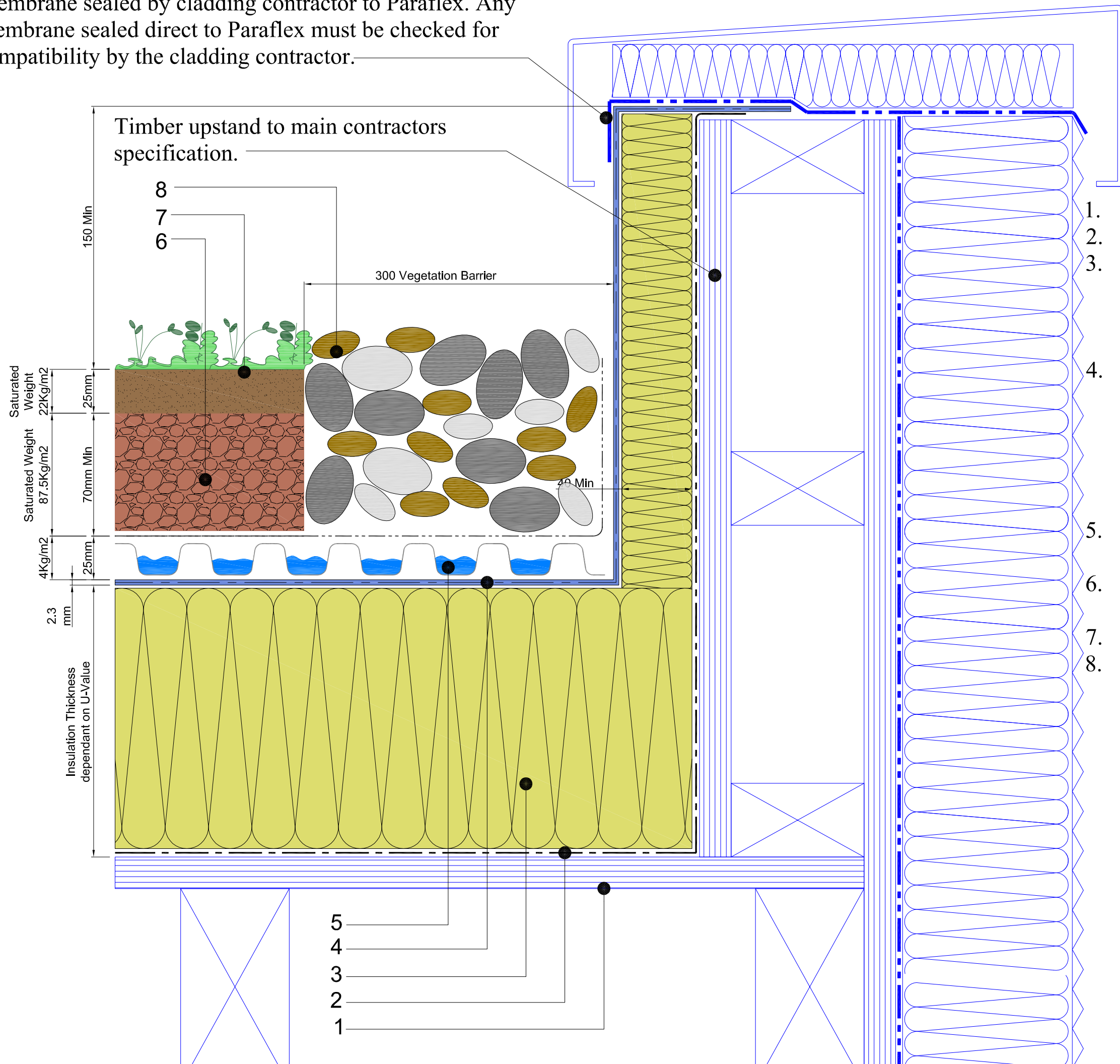


Membrane sealed by cladding contractor to Paraflex. Any membrane sealed direct to Paraflex must be checked for compatibility by the cladding contractor.



1. Timber deck
2. Self adhesive vapour barrier.
3. Tapered or uniform polyurethane insulation adhered to base with Radmat adhesive layer.
  - > Self adhesive foil to all board joints.
4. Paraflex System
  - > Paraflex universal primer
  - > Hand cast kiln dried sand
  - > Paraflex FD 1.5 mm initial coat
  - > Radmat 165Kg reinforcement layer
  - > Paraflex FD 0.8mm top coat
5. Radmat D25 water retention & drainage board, G12 filter membrane
6. Radmat 100% recycled green roof growing media
7. Pregrown roof garden mat
8. 300mm wide ballast margin

Note: Expected rainwater retention from 20 Litres/m2

<b>Radmat</b> building products	
TITLE <b>WARM ROOF PARAFLEX TIMBER DECK SEDUM BLANKET GARDEN PERIMETER DETAIL</b>	
DATE: <b>Aug '09</b>	SCALE <b>N.T.S.</b>
DRAWING NUMBER <b>RAD-PAR-310</b>	