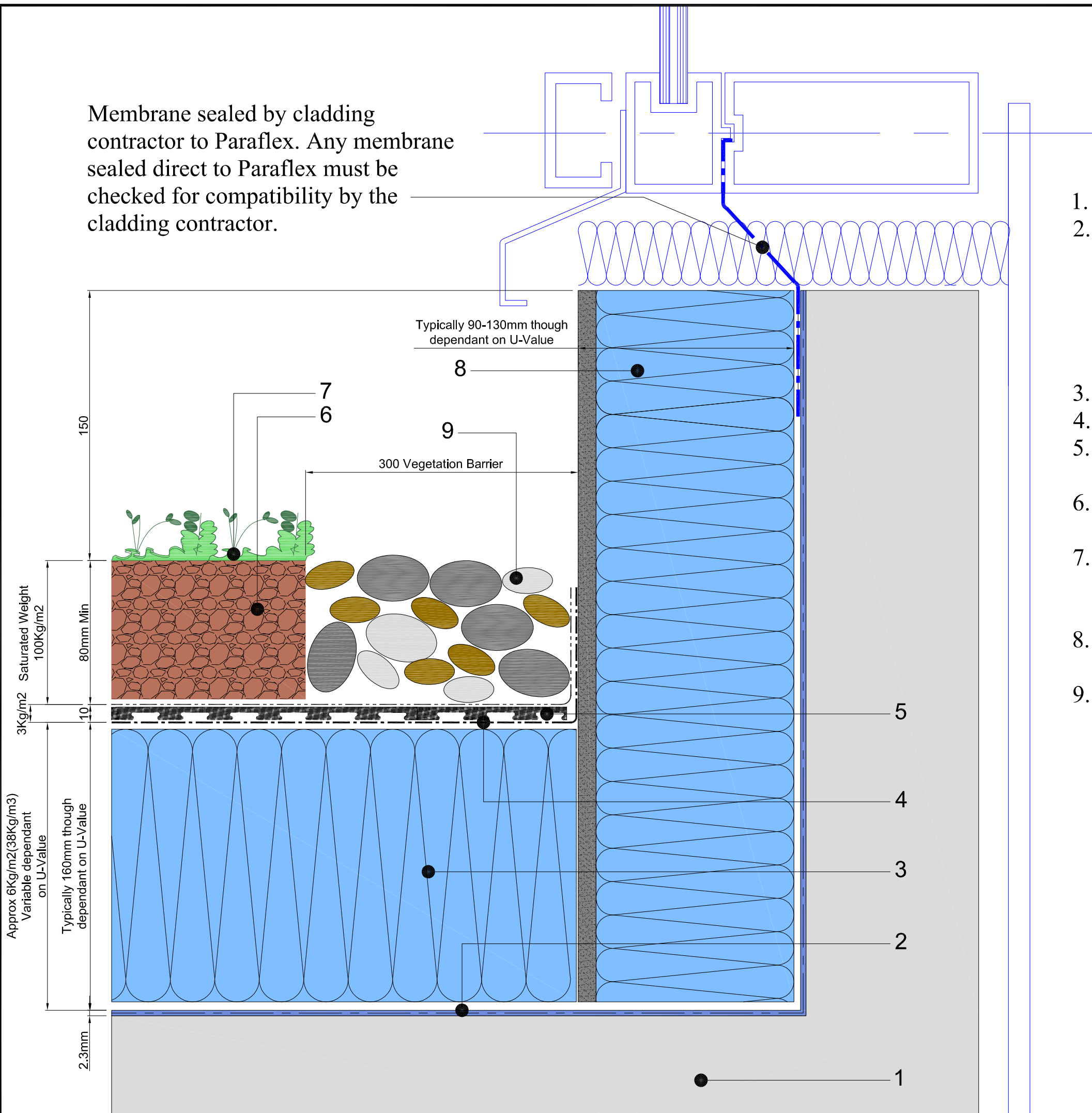


Membrane sealed by cladding contractor to Paraflex. Any membrane sealed direct to Paraflex must be checked for compatibility by the cladding contractor.



1. Concrete deck
2. Paraflex system
 - > Paraflex universal primer
 - > Hand cast kiln dried sand cast into primer
 - > Paraflex FD 1.5 mm initial coat
 - > Radmat 165Kg reinforcement layer
 - > Paraflex FD 0.8mm top coat
3. Extruded polystyrene insulation board.
4. Min-K thermal sheet.
5. Radmat G10 water retention & drainage mat
G11 filter membrane
6. Radmat 100% recycled green roof growing media
7. Plant layer either plug & plant
sedum/perennials or scatter sedum by means
of hand or hydro seeding
8. Extruded Polystyrene Cementitious Faced
Insulation Board
9. 300mm Wide Ballast Margin

Note: Expected rainwater retention from 20 Litres/m²



TITLE **INVERTED ROOF PARAFLEX
CONCRETE DECK BROWN BIO-DIVERSE
GARDEN UPSTAND DETAIL**

DATE: **Aug '09** | SCALE **N.T.S.**

DRAWING NUMBER
RAD-PAR-403