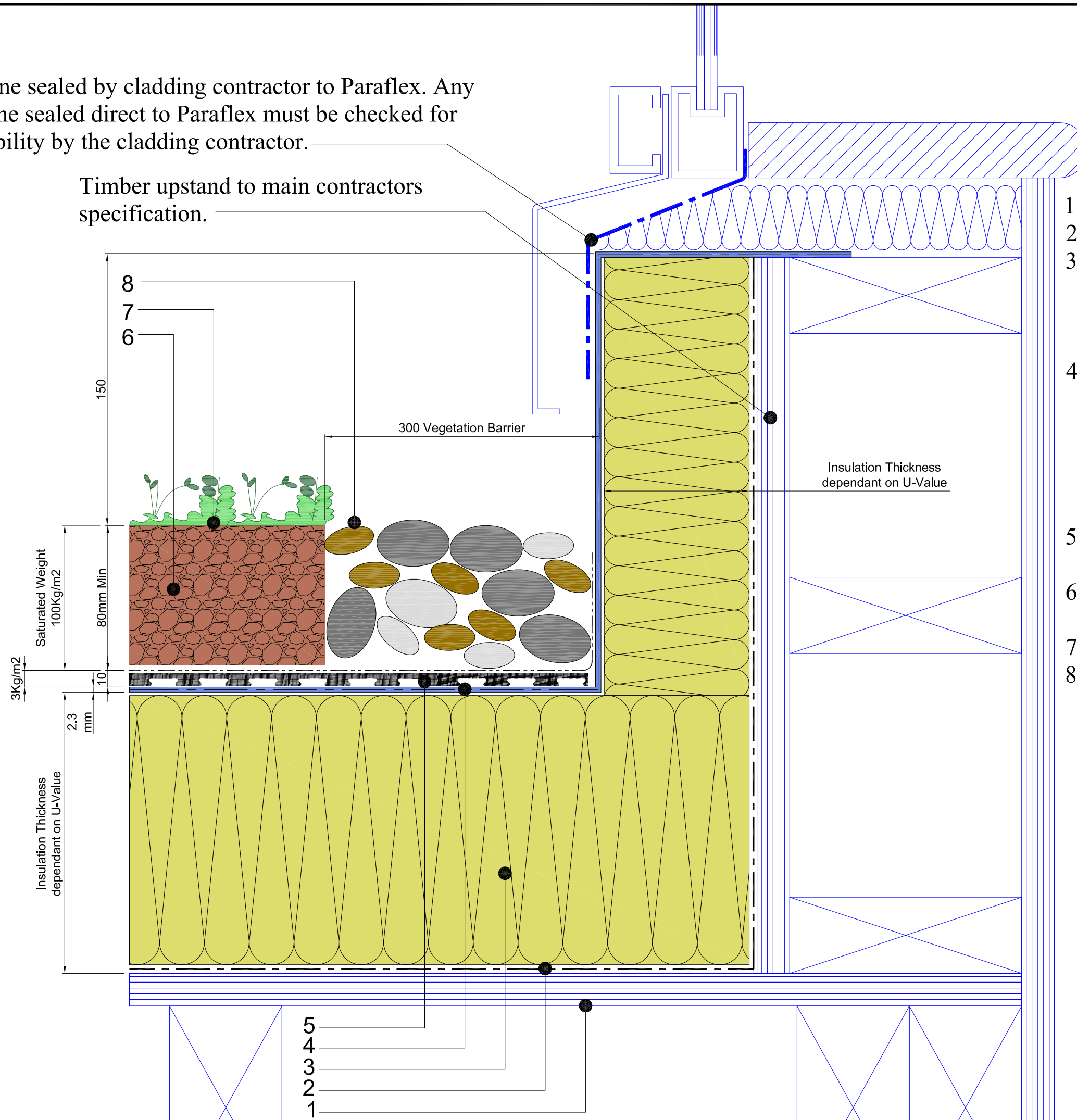


Membrane sealed by cladding contractor to Paraflex. Any membrane sealed direct to Paraflex must be checked for compatibility by the cladding contractor.

Timber upstand to main contractors specification.



1. Timber deck
2. Self adhesive vapour barrier.
3. Tapered or uniform polyurethane insulation adhered to base with Radmat adhesive layer.
  - > Self adhesive foil to all board joints.
4. Paraflex System
  - > Paraflex universal primer
  - > Hand cast kiln dried sand
  - > Paraflex FD 1.5 mm initial coat
  - > Radmat 165Kg reinforcement layer
  - > Paraflex FD 0.8mm top coat
5. Radmat G10 water retention & drainage mat G11 filter membrane
6. Radmat 100% recycled green roof growing media
7. Plant layer either plug & plant
8. 300mm wide ballast margin

Note: Expected rainwater retention  
From 20 Litres/m<sup>2</sup>



TITLE <b>WARM ROOF PARAFLEX TIMBER DECK BROWN BIO-DIVERSE GARDEN UPSTAND DETAIL</b>	
DATE: <b>Aug '09</b>	SCALE <b>N.T.S.</b>
DRAWING NUMBER <b>RAD-PAR-411</b>	