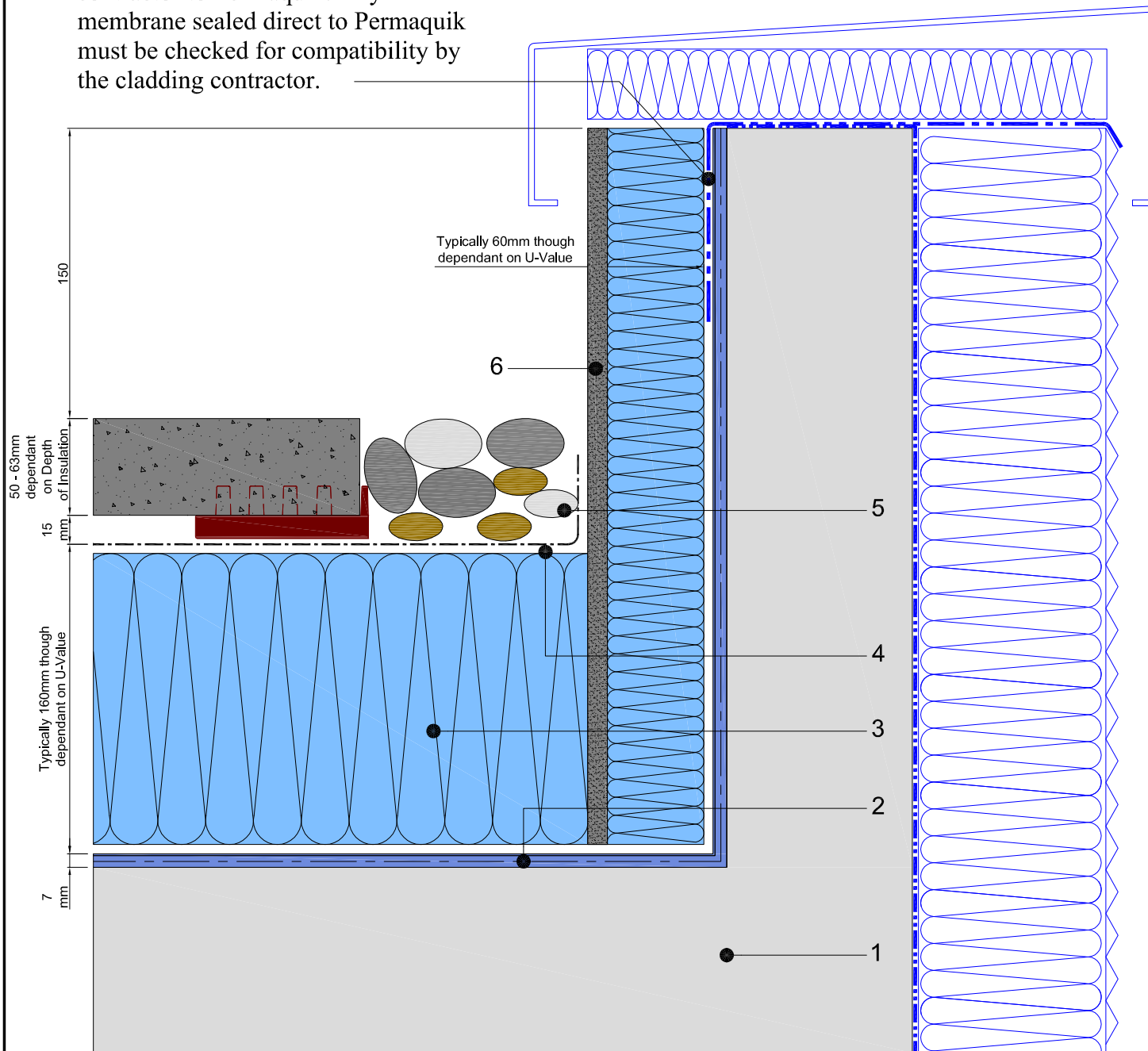


Membrane sealed by cladding contractor to Permaquik. Any membrane sealed direct to Permaquik must be checked for compatibility by the cladding contractor.



1. Concrete deck
2. Permaquik 6100 system
 - > Radmat Permaquik 6100 3mm hot melt membrane
 - > Radmat 2016 reinforcement fleece
 - > Radmat Permaquik 6100 3mm hot melt membrane
 - > Radmat protection sheet
3. Extruded polystyrene insulation board
4. Min-K thermal sheet
5. Paviors and ballast margin
6. Radmat uncured neoprene rubber strap
7. Extruded polystyrene cementitious faced insulation board



TITLE **INVERTED PERMAQUIK 6100
PARAPET DETAIL**

DATE: **April '09** SCALE **N.T.S.**

DRAWING NUMBER
RAD-PQ-102