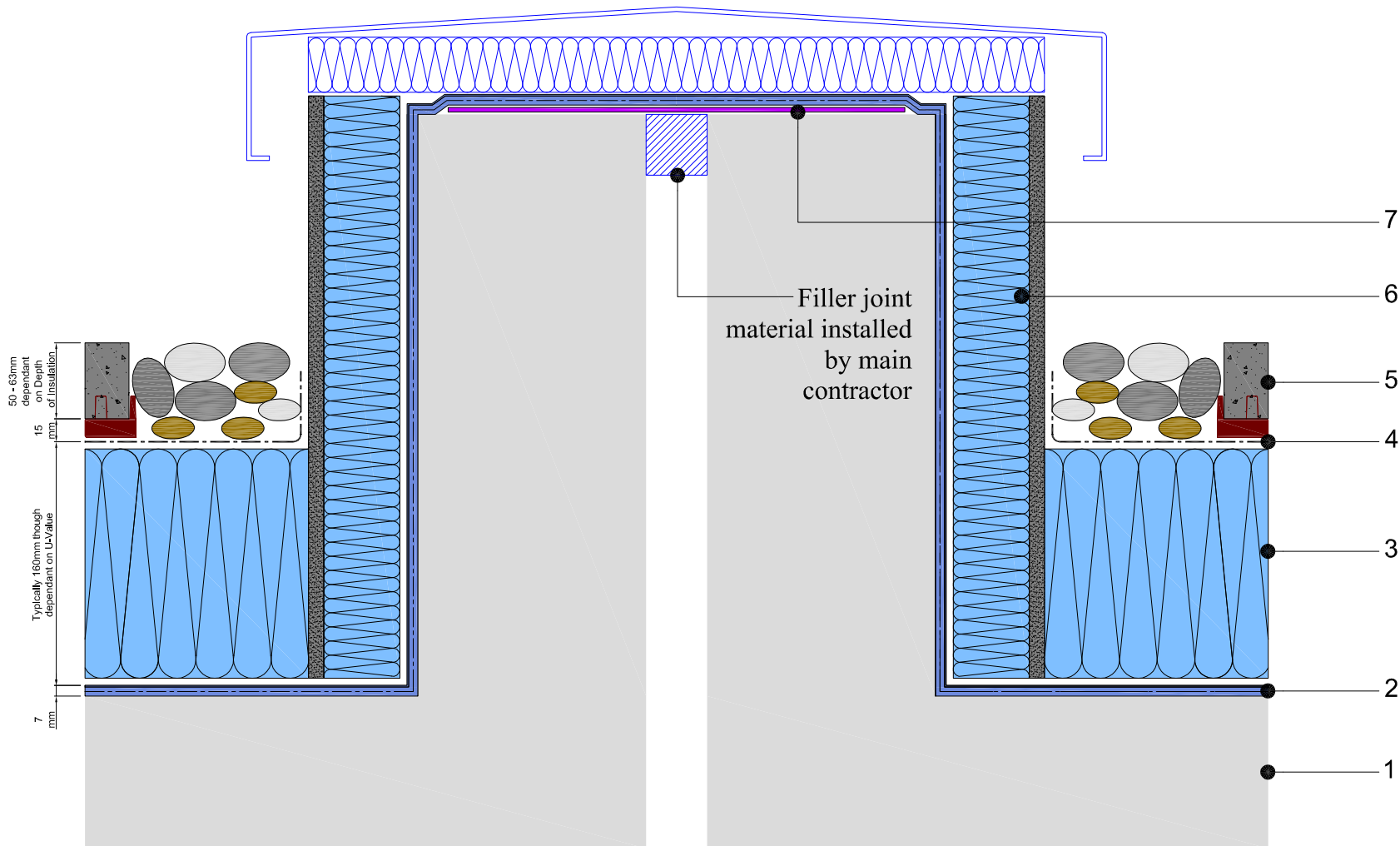


1. Concrete deck
2. Permaquik 6100 system
 - > Radmat Permaquik 6100 3mm hot melt membrane
 - > Radmat 2016 reinforcement fleece
 - > Radmat Permaquik 6100 3mm hot melt membrane
 - > Radmat protection sheet
3. Extruded polystyrene insulation board
4. Min-K thermal sheet
5. Paviers and ballast margin
6. Extruded polystyrene cementitious faced insulation board
7. Radflex 125 expansion joint



TITLE INVERTED PERMAQUIK 6100 KERB EXPANSION JOINT	
DATE: April '09	SCALE N.T.S.
DRAWING NUMBER RAD-PQ-105	