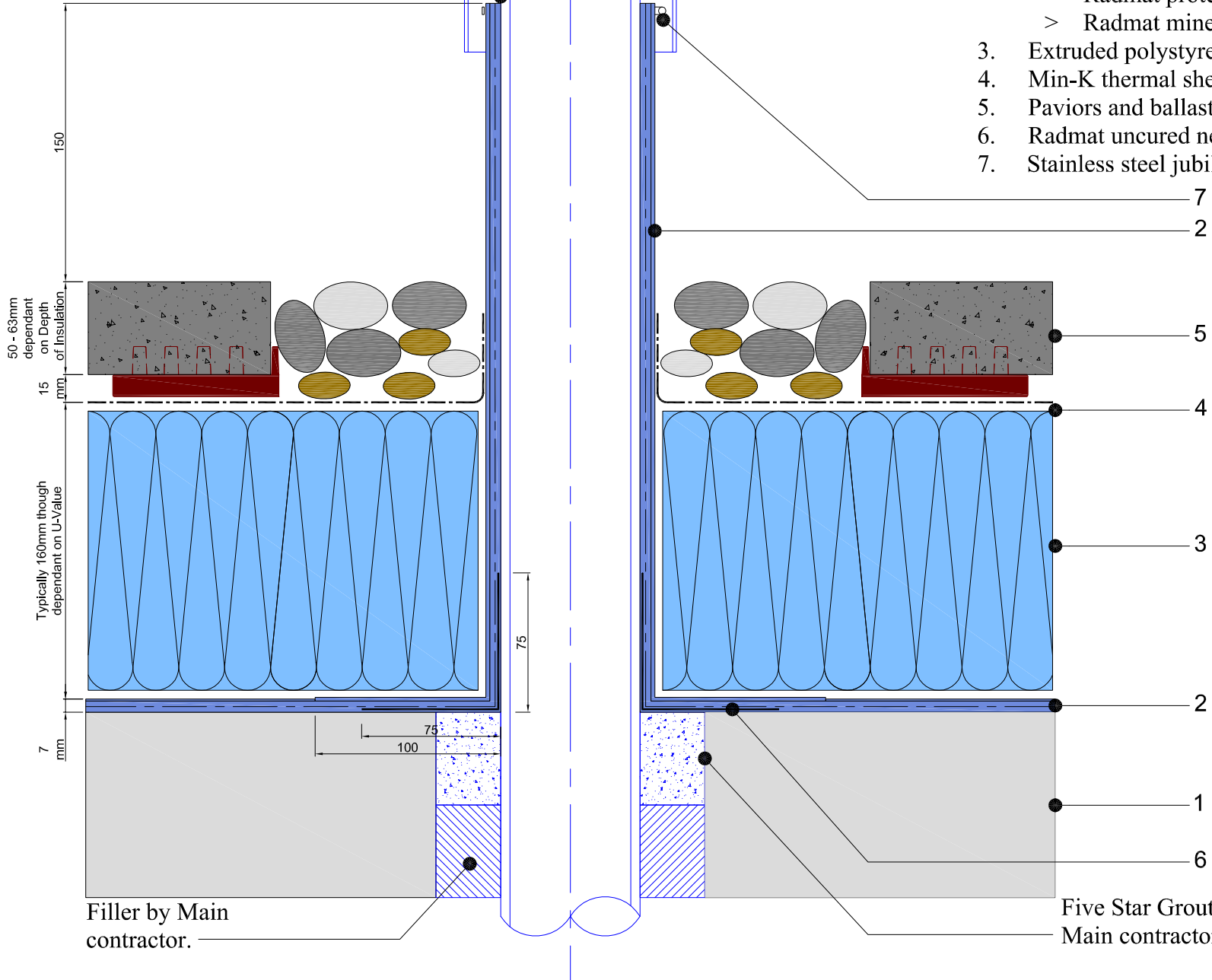


Cowl flashing by M&E contractor to allow for hot air to vent

Metal Pipe

1. Concrete deck
2. Permaquik 6100 system
 - > Radmat Permaquik 6100 3mm hot melt membrane
 - > Radmat 2016 reinforcement fleece
 - > Radmat Permaquik 6100 3mm hot melt membrane
 - > Radmat protection sheet - flat
 - > Radmat mineral faced protection sheet - upstand
3. Extruded polystyrene insulation board
4. Min-K thermal sheet
5. Paviers and ballast margin
6. Radmat uncured neoprene rubber strap
7. Stainless steel jubilee clip



50 - 63mm dependant on Depth of Insulation

Typically 160mm though dependant on U-Value

7 mm

15 mm

75

100

Radmat
building products

TITLE **INVERTED PERMAQUIK 6100 COLD PIPE PENETRATION DETAIL**

DATE: **May '09** | SCALE **N.T.S.**

DRAWING NUMBER
RAD-PQ-106

Filler by Main contractor.

Five Star Grout by Main contractor.