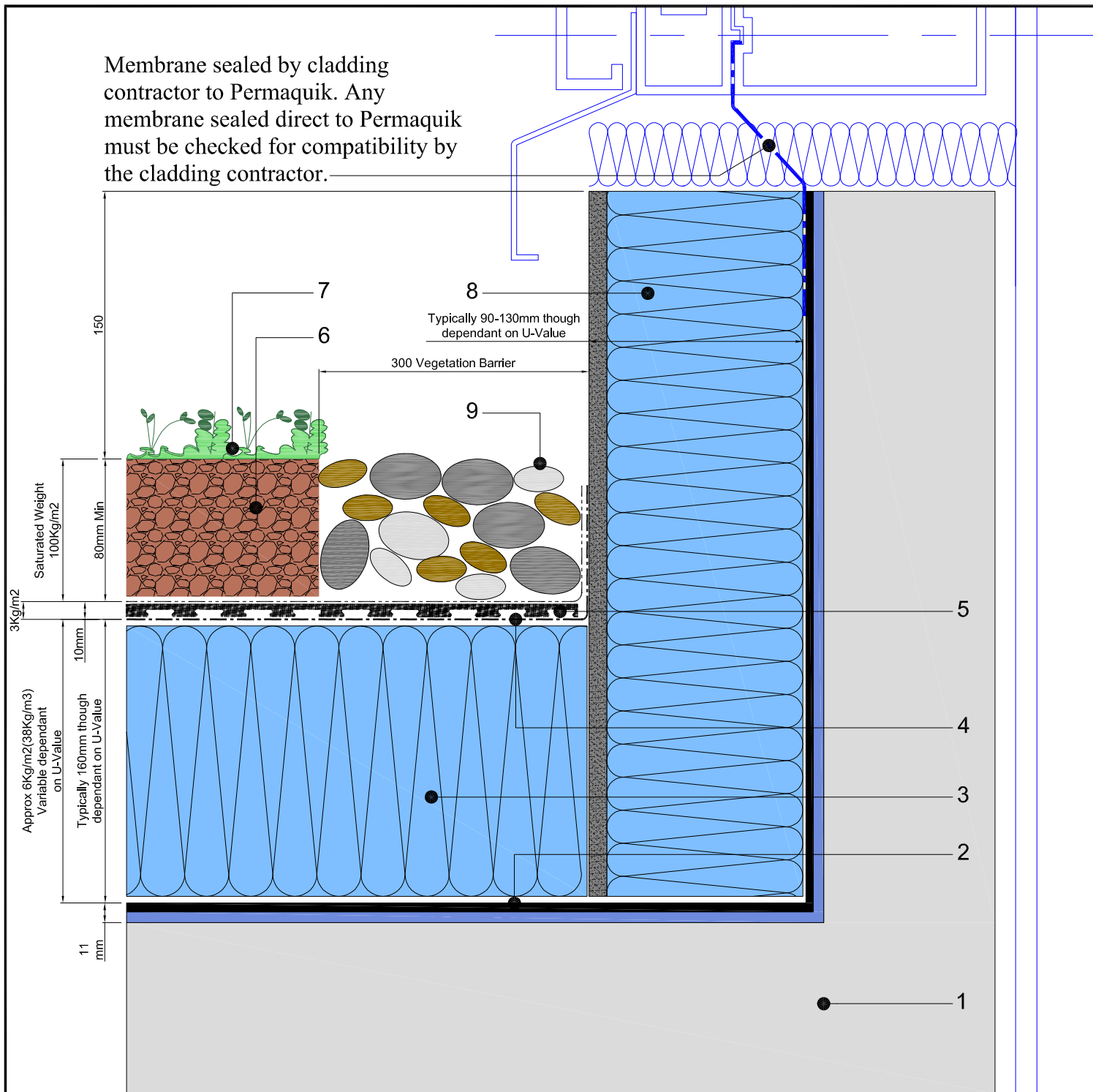


Membrane sealed by cladding contractor to Permaquik. Any membrane sealed direct to Permaquik must be checked for compatibility by the cladding contractor.



1. Concrete deck
2. Permaquik 6100 system
  - > Radmat Permaquik 6100 3mm hot melt membrane
  - > Radmat 2016 reinforcement fleece
  - > Radmat Permaquik 6100 3mm hot melt membrane
  - > Radmat 5mm root barrier membrane
3. Extruded polystyrene insulation board
4. Min-K thermal sheet
5. Radmat G10 water retention & drainage mat G11 filter membrane
6. Radmat 100% recycled green roof growing media
7. Plant layer either plug & plant sedum/perennials or scatter sedum by means of hand or hydro seeding
8. Extruded polystyrene cementitious faced insulation board
9. 300mm wide ballast margin

Note: Expected rainwater retention from 20 litres/m<sup>2</sup>



TITLE <b>PERMAQUIK 6100 INVERTED UPSTAND BROWN BIO-DIVERSE ROOF GARDEN DETAIL</b>	
DATE: <b>July '09</b>	SCALE <b>N.T.S.</b>
DRAWING NUMBER <b>RAD-PQ-403</b>	