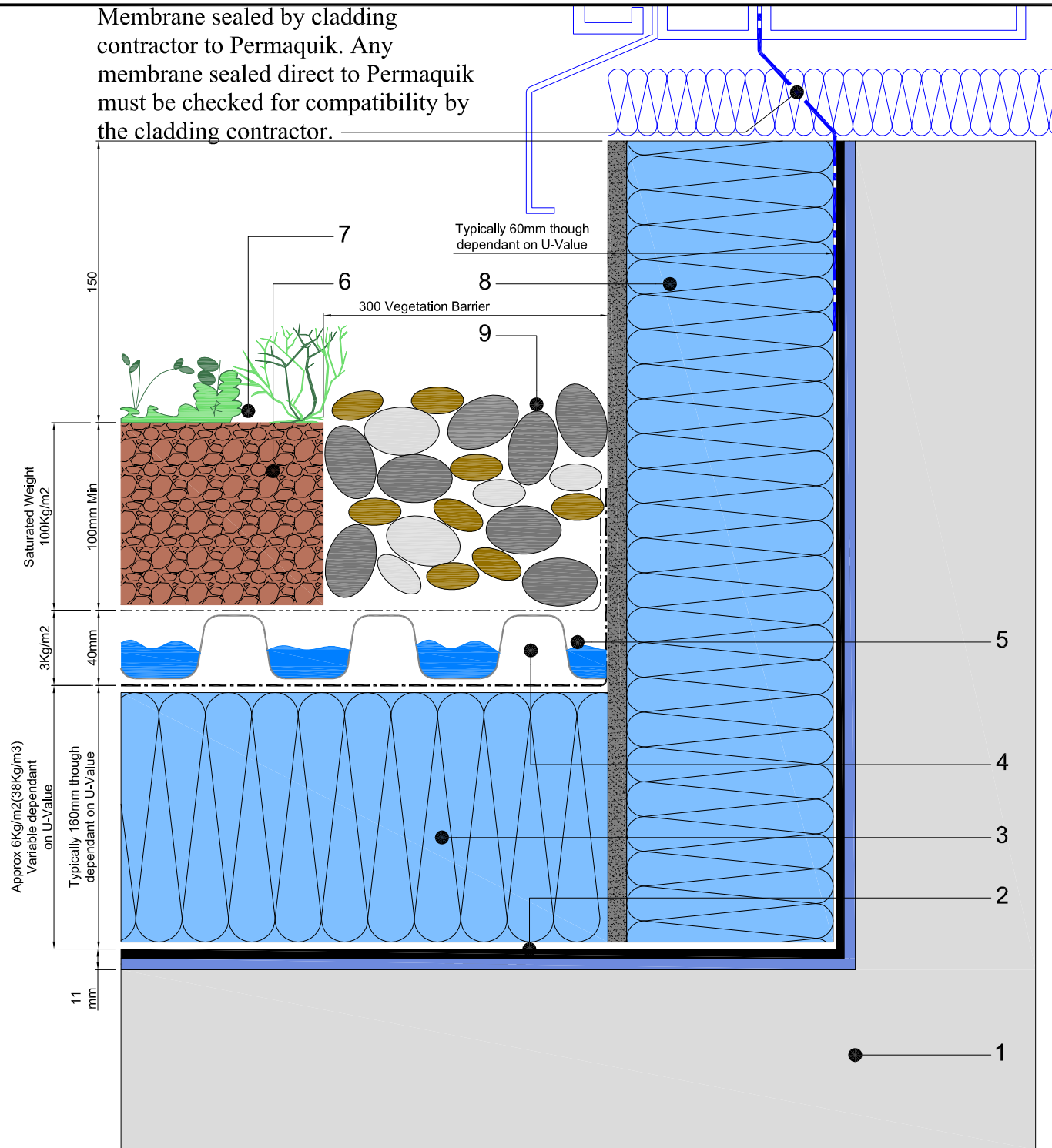


Membrane sealed by cladding contractor to Permaquik. Any membrane sealed direct to Permaquik must be checked for compatibility by the cladding contractor.



1. Concrete deck
2. Permaquik 6100 system
  - > Radmat Permaquik 6100 3mm hot melt membrane
  - > Radmat 2016 reinforcement fleece
  - > Radmat Permaquik 6100 3mm hot melt membrane
  - > Radmat 5mm root barrier membrane
3. Extruded polystyrene insulation board
4. Min-K thermal sheet
5. Radmat D40 water retention & drainage board G12 filter membrane
6. Radmat 100% recycled green roof growing media
7. Plant Layer either plug & plant wild flowers/perennials or selected herbs
8. Extruded polystyrene cementitious faced insulation board
9. 300mm wide ballast margin

Note: Expected rainwater retention from 40 litres/m<sup>2</sup>



TITLE  
PERMAQUIK 6100 INVERTED UPSTAND  
SEMI INTENSIVE ROOF GARDEN DETAIL

DATE: July '09 SCALE N.T.S.

DRAWING NUMBER

**RAD-PQ-503**